

Planning for the Future

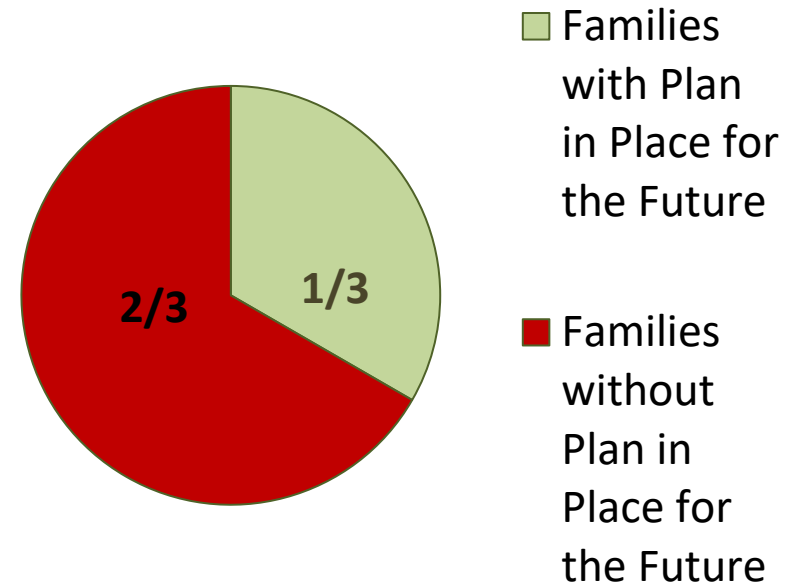
VPDCA

March 13, 2021

Changing Demographics

- We are seeing the first generation of adults with DD surviving into old age in large numbers and outliving their parents.
- Almost 1 million adults with I/DD live with aging caregivers, 60 and older, 70 and 80 yrs old

Plans for the Future



Aging Caregiver Concerns

1. Who will care for my child when I can no longer do it?
2. Where and with whom will my child with I/DD live after I'm gone?
3. What services will be available for them?

But in fact...



Circle of Support



[This Photo](#) by Unknown Author is licensed under [CC BY-NC](#)

Decision Making



MARCH 18, 2020 FINDING THE RIGHT PATH FOR DEVELOPMENTALLY DISABLED ADULTS

10:00 a.m. to 12:00 p.m.
Family Focus Resource Center , Antelope Valley

Register by March 5th to (661) 945-9598 or
kristine.gutierrez@csun.edu

Por favor llame si necesita interpretación

Do you need to help a developmentally disabled young person entering adulthood but don't know how? Is there a loved one in your life that is incapacitated and needs help with daily living or might be vulnerable to financial abuse or fraud? Join us for a presentation on Probate Conservatorships and alternatives to Conservatorships.

**Durable Powers of
Attorney & Other
Alternatives**

**Limited
Conservatorships &
Seven Powers
Explained**

**Overview of General
Conservatorships**

**Of the Person & Of
the Estate Discussed**

**The Court Process &
What to Expect**

PRESENTED BY

Attorney
Katherine H. Chew
Conover & Grebe, LLP

3424 W. Carson Street
Suite 320
Torrance, CA 90503
310-542-9888

SUPPORTED DECISION-MAKING: AN ALTERNATIVE TO CONSERVATORSHIP

"Do I HAVE to get
conservatorship?"

Watch our comprehensive 5
part training "SUPPORTED
DECISION-MAKING: an
alternative to
conservatorship"



- Conservatorship
- Supported Decision Making
- Durable Power of Attorney

Living Situations

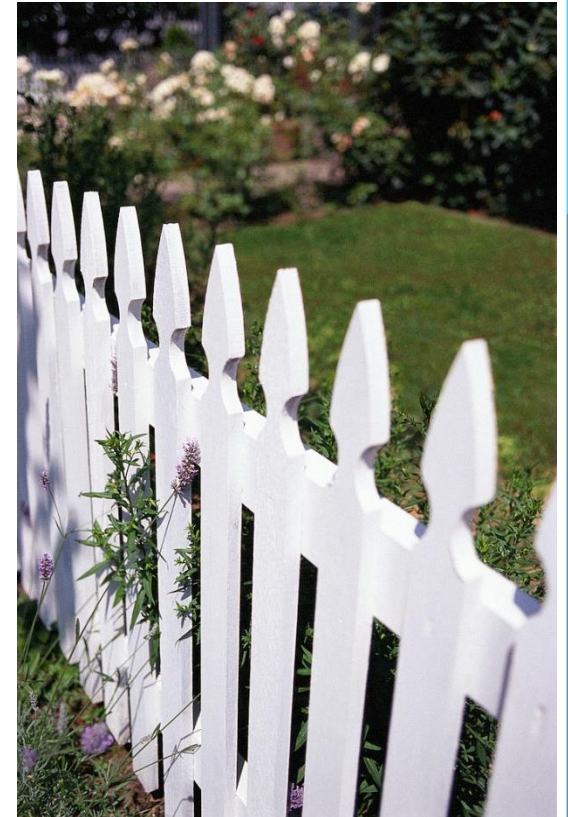


A Home of Your Own

- Individuals live in homes that they own, lease or rent like other members of their community.
- They choose where to live and with whom and they control what happens in their home.

Benefits:

- Individuals are secure in their homes and do not have to move if their needs, services or service agency changes.



Relationships



Community Membership

- An individual fully participates in the mainstream of community life according to personal choice and preference.
- He or she has opportunities to join clubs, organization, and religious groups and to use local community resources.



Healthcare



Disability and Healthcare **ACCESS**



Healthcare access barriers for working-age adults include

1 in 3
adults with disabilities
(18-44 years)

do not have a
**usual healthcare
provider**



1 in 3
adults with disabilities
(18-44 years)

have an **unmet
healthcare need
because of cost
in the past year**



1 in 4
adults with disabilities
(45-64 years)

did not have a
**routine check-up
in the past year**





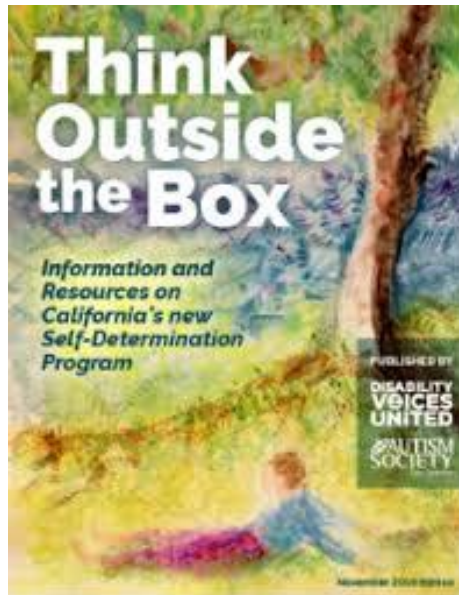
USC UNIVERSITY CENTER
FOR EXCELLENCE IN
DEVELOPMENTAL
DISABILITIES



Higher Education

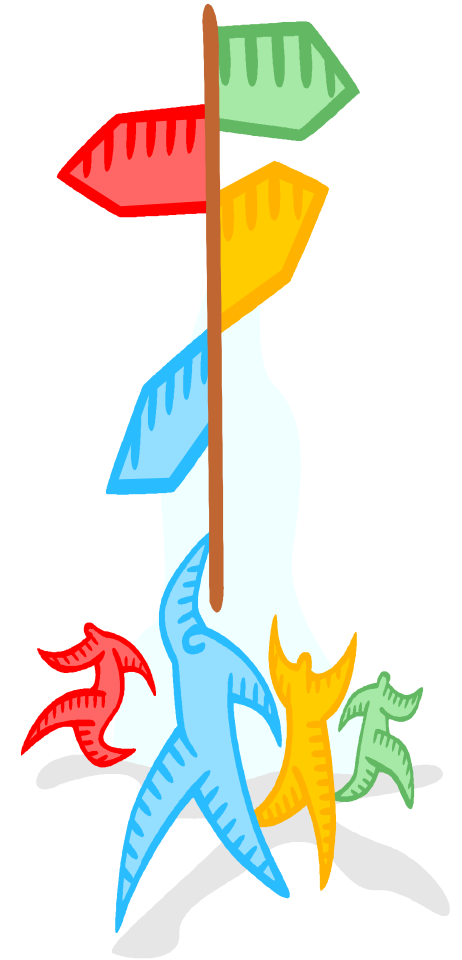


Self-Determination



Independent Living

- Individuals are supported to communicate their preferences choices and needs.
- When the person with a disability struggles to direct their own services, they have a **circle of support** that knows them well enough to figure out what the individual would choose.
- The individual makes his or her own everyday choices as well as plan for the future.
- Individuals direct the services they receive and have a choice of agencies and staff.



The Settings Rule



Frequently Asked Questions: Home and Community-Based Services Rules

General

Consumer Related

Provider Related

Q1. What are the federal home and community-based services rules?

A. In January 2014, the federal Centers for Medicare & Medicaid Services issued final rules, or regulations, as part of the Affordable Care Act. The rules ensure that home and community-based services programs funded through Medicaid – called Medi-Cal in California – provide eligible persons with disabilities full access to the benefits of community living and offer them long-term services and supports in the most integrated settings of their choosing.

Q2. What do the rules say?

A. Individuals must receive services in the most integrated settings of their choosing and also have full access to the benefits of community living. Settings where individuals live and receive services must be about the nature and quality of individuals' experiences, rather than the type of buildings where the services are delivered.

Q3. What is the federal intent of these rules?

A. The intent is to ensure that states receiving federal Medicaid funds meet the needs of consumers who choose to get their long-term services and supports in their home or community, rather than in



Comments or Questions

The Department welcomes comments or questions by email to HCBSregs@dds.ca.gov, or by mail to:

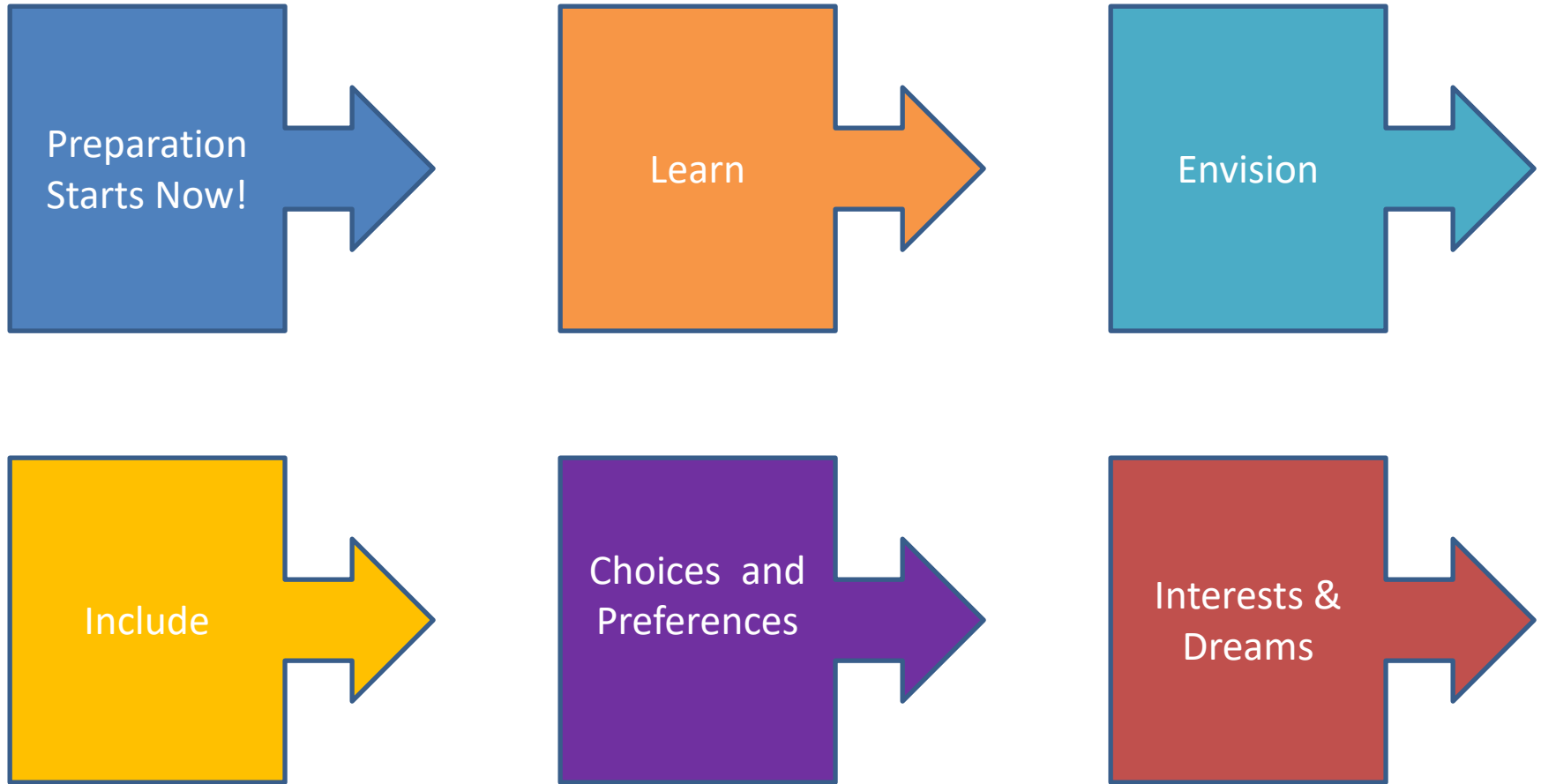
Department of Developmental Services
Community Services Division
1600 9th Street, Room 320
Sacramento, CA 95814

Supporting Your Child in Adulthood- transition starts now





Preparing for the ITP



Transition Starts Now!

- You can support your child in becoming independent at any age
- It is never too early or too late to start



Learn

- Learn about
 - transition
 - adult services
- Help your child learn about
 - His/her strengths
 - his/her disability and needs
 - the IEP process
 - transition



Envision

- Your child 5 years ago
- Your child now
- Your child in 5 years
- What supports might be needed
- Who can provide them
- Age of majority



Include

- Household chores
- Earning allowance
- Visual scheduler
- Age/developmentally appropriate toys
- Involve in problem solving
- Time management
- Set personal goals
- IEPs



Choices and Preferences

- Picking clothes
- Giving choices
- Ordering in a restaurant
- Choosing electives
- Choosing activities
- Allowing privacy

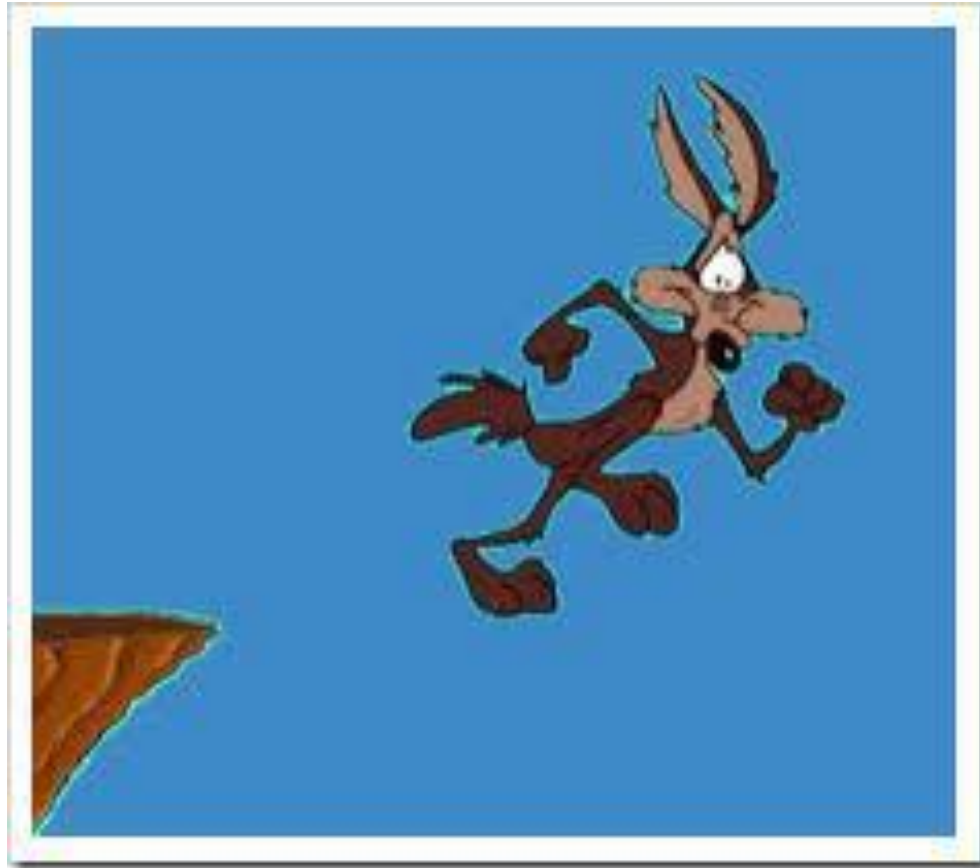


Interests and Dreams

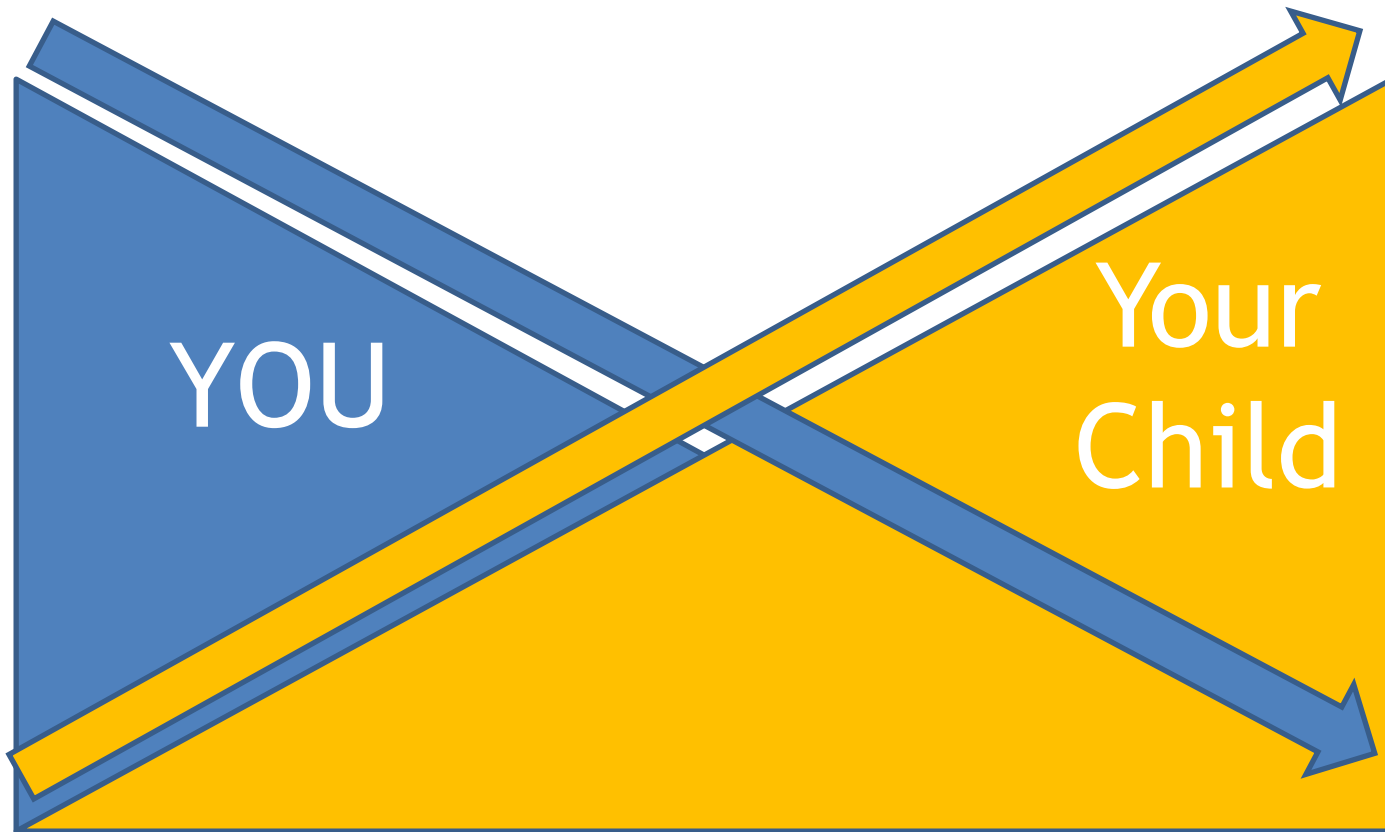
- Encourage exploration
- Expose to new ideas and situations
- Don't limit dreams
- Use to support non-preferred tasks



It's a Ramp Not a Cliff



It's a Ramp Not a Cliff





Your
Child

Services, Supports,
Friends, Family, Etc.

What I Do for My Child (and Who Else Can Do It)

Area (e.g. Education, Daily Living)	What Do I Do?	Who Else Can Do It?	How Do We Get There?

Fran Goldfarb, MA, MCHES
Director, Community Education
USC UCEDD CHLA
323 361-3831
fgoldfarb@chla.usc.edu